

Sort it.
BRING IT.
Save it!



Helping you
recycle more of
the right things,
in the right way.



www.veolia.co.uk/birmingham
www.birmingham.gov.uk/waste



WORKING IN PARTNERSHIP

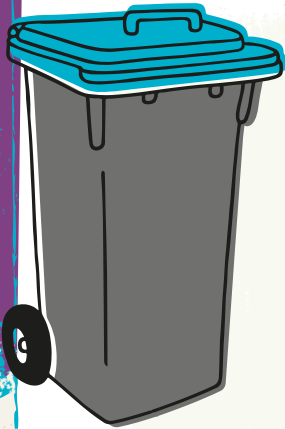
At home...

There are many items in your everyday waste that can be recycled and made into something new. It's easy to recycle at home, and by sorting your waste into different types, you can help us to recycle more together.

Recycling

Your wheelie bin for recycling has a **blue lid**, and also includes a pod for paper and card. This keeps it separate from the other materials in the main body of the bin, reduces contamination and helps us sort the different types of recycling.

Recycling bin **Yes please**



Metal and plastic lids



Clean foil and foil trays



Aerosols



Food and drink cans



Brown, green and clear glass bottles and jars



Plastic drink bottles (lids removed)



Plastic household and toiletry bottles (lids removed)



Plastic pots, tubs and trays (no black trays)

No thanks



Food waste



Paint or other non-food tins



Drinking glasses



Pyrex or ceramics



Black food trays



Corks



Hard plastics



Light bulbs and mirrors



Plastic film or wrappers



Polystyrene



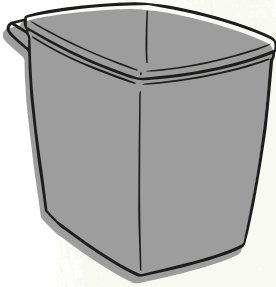
Batteries



Carrier bags and black sacks

Paper Pod

Yes please



Yellow pages



Newspapers



Cardboard (flattened)



Cereal boxes and thin card



Junk mail and envelopes



Telephone directories

No thanks



Milk, juice and tetra pack cartons



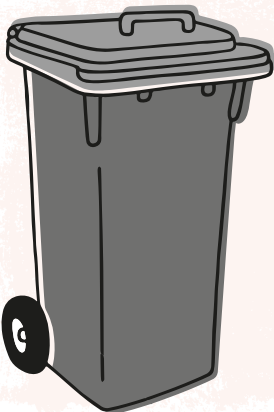
Padded envelopes



Soiled paper or card i.e. pizza boxes

General Waste

No thanks



Your wheelie bin for your household rubbish (everything that cannot be recycled) has a grey lid. This bin can hold 2-3 bags.



Garden waste



Things that should go into your recycling bin



Bulky waste



Electrical items and batteries



Wood



Building waste i.e. soil and rubble



Asbestos

You can take these, except asbestos, to your nearest household recycling centre.

At our Household Recycling Centres...

SORT your waste into different types before your visit. This will help to speed up your visit and reduce contamination, meaning we can recycle more of your waste.

BRING your sorted waste to your nearest Household Recycling Centre. We are open **seven days** a week.

SAVE recyclable items by reusing them as much as possible. This helps protect the environment and save energy!

Birmingham's Household Recycling Centres take a wide range of recyclable items and they're really useful for waste that can't be recycled or disposed of via collection services or bring banks.

Sort it.
BRING IT.
Save it!

DID YOU KNOW?

We host a re-use centre at our Sutton Coldfield site. The ReUsers Shop will gladly take your unwanted items that are too good to be thrown away and can find another home.

What can you recycle at our Household Recycling Centres?

You may already know that you can recycle **garden waste, wood and metal** at Birmingham's Household Recycling Centres, but did you know that you can also recycle...



Car and household batteries



Small electricals, such as toasters and kettles



Lightbulbs



Fluorescent tubes



Clothing



Bulky waste



Computer equipment

What can't you bring?



Asbestos

For unusual items, please check with a member of staff on arrival.

Tips on how to make your Household Recycling Centre visit as easy as possible

Sort your waste into different types before you set off – your visit will be quicker, and more will be recycled.

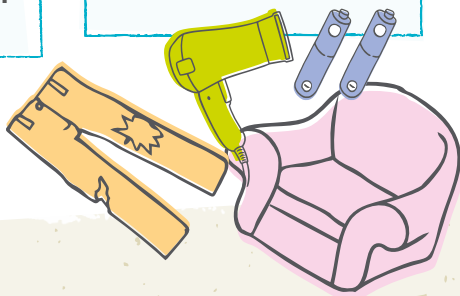
If you're not sure where to put something, ask a **member of staff** who will be happy to help you.

Plan your journey. Our sites can become very busy during summer weekends and bank holidays, so if possible visit outside these times, or view the queue before you travel.

Wear sensible footwear when visiting.

Please **don't use your mobile** on site.

Children and animals must stay in your vehicle at all times, for their safety.



Where are Birmingham's Household Recycling Centres?

Sutton Coldfield

Norris Way, Sutton Coldfield, B75 7BB

Perry Barr

Holford Drive, Perry Barr, B42 2TU

Castle Bromwich

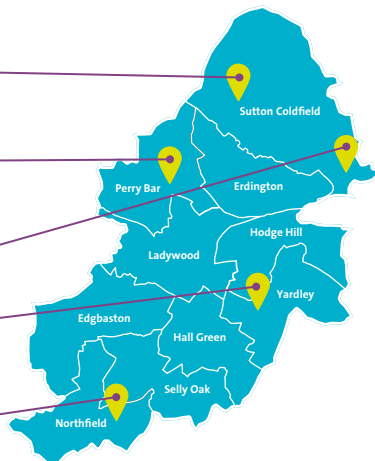
Tameside Drive, Castle Bromwich, B35 7AG

Tyseley

James Road, Tyseley, B11 2BA

Kings Norton

Lifford Lane, Kings Norton, B30 3JJ



Household Recycling Centre



Household Recycling Centre opening times change throughout the year – make sure you visit the Veolia website for the most up to date information.

DID YOU KNOW?

You can view the queue at any of our recycling centres at www.veolia.co.uk/birmingham to help you plan your journey.

USING A VAN? You need to pre-book your visit.

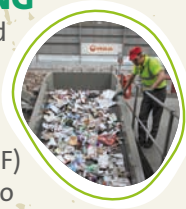
Businesses can also bring waste for a charge. Visit www.veolia.co.uk/birmingham or call 0203 567 3915 Monday to Friday between 8am and 4pm to find out more and book your slot.



What happens to your waste and recycling?

MIXED RECYCLING

Once your household recycling has been collected, it is taken to a Materials Recovery facility (MRF) where it is sorted into different types and sent to be reprocessed into new products.



GENERAL WASTE

Non-recyclable waste is processed at an Energy Recovery Facility (ERF) where it is used to generate clean, low carbon electricity.

DID YOU KNOW?



Plastic bottles can be recycled back into **new bottles, fleeces** and even **plastic tables and chairs!**



Aluminium cans can be collected, sorted, recycled and back on shop shelves **within 12 weeks!**



The electricity generated by Tyseley ERF in a year is enough to power up to **55,000 homes!**



WORKING IN PARTNERSHIP

Veolia, in partnership with Birmingham City Council, are helping residents recycle more of the right things, in the right way.